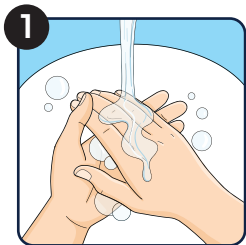
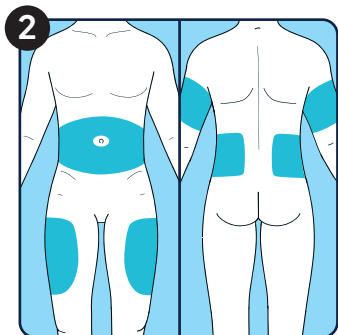


How to use a slimQuick. pen?



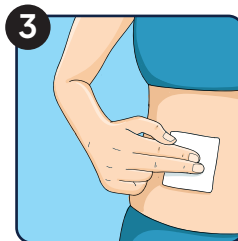
Before you begin, thoroughly wash your hands with soap and hot water and ensure that they are dry.



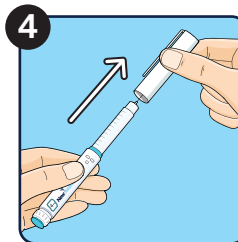
Firstly, choose the **area of skin** you feel most comfortable using for the injection.

slimQuick. is a subcutaneous injection, meaning that it is injected into the fat beneath the surface of the skin.

Most people choose to use the area 3-4 inches either side of the navel (tummy button), but you can also use the upper arm or upper thigh.



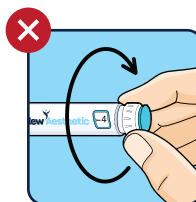
To prepare the area of skin chosen for the injection, firstly ensure the area is clean and dry. Take an alcohol swab (sold separately) and clean the chosen area thoroughly before allowing it to dry.



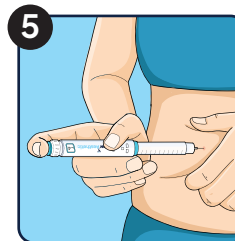
Remove a needle cap (sold separately) from its packaging and fit to the end of the slimQuick. pen, ensuring it clicks securely into place.

Once the needle cap is fitted, simply twist the dial at the other end of the pen to select the required dosage.

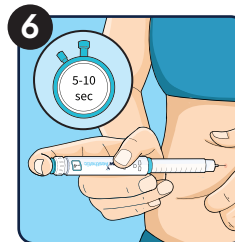
PLEASE NOTE: Each click of the dial delivers 0.25mg of Tirzepatide.



DO NOT twist the dial until you are ready to administer a dose



With one hand, pinch the chosen area of skin between your fingers, with the other hand press the slimQuick. pen firmly against the fold of skin so that the needle enters and is pushed all the way in.



Finally, press and hold the button at the opposite end of the slimQuick. pen and wait for 5-10 seconds to allow the solution to fully disperse.



A tiny spot of blood can occur and is totally normal. If necessary, hold a cotton wool pad or similar against the spot for a few seconds until it stops bleeding.

FAQ



Some slimQuick. users find that 2.5mg/week is a good dose for them and fits their needs perfectly, so we encourage users to take the time to fully assess each dosage level and not rush to use a higher dose prematurely.

Once you feel as though you are ready to proceed to the next dosage level, we recommend the medical dosage scale that increases in steps of 2.5mgs each time.

So after 2.5mg, the next dose would be 5mg/week, and you would again stay at this dose for 3-4 weeks to again assess how you feel and to check for any negative side effects.

The maximum dose that is considered medically safe is 15mg/week, but in our experience it is extremely rare for someone to require this dose.

The average dose in our experience is 5mg - 7.5mg - 10mg per week. There is no need for you to continue upping the dose every 3-4 weeks, provided you are still experiencing the positive effects from slimQuick. This is why it's important to really pay attention to your body, how you feel at each dosage level and to closely monitor your progress.

Please remember that a healthy diet, with correct calorie intake for weight-loss and regular exercise will enhance your results from slimQuick. considerably.

4. What can you expect from slimQuick.?

The main positive effects you can expect to achieve from using slimQuick. are:

- Feeling fuller for longer
- Feeling fuller from smaller portions of food
- Reduced cravings, particularly for sugary foods

It is difficult to answer the question: *"how much weight will I lose?"*

Everyone is different, everyone loses weight at different rates, everyone's activity level is different, there are far too many variables at work for anyone to ever give an accurate answer to this question.

However, in medical studies, participants lost up to 8% of their overall bodyweight in the first 6-8 weeks of using Tirzepatide. In tests conducted by us prior to release of slimQuick. we found that our testers lost slightly more than this.

Whilst everyone's results will vary and will depend upon their own goals and efforts, one thing that we have found to be unanimously consistent amongst all who tried slimQuick. is that everyone was delighted with their own individual results.

Nearly all those that tested also said that slimQuick. worked even better than they had expected and that they would almost certainly use it again in future!

5. Is slimQuick. (Tirzepatide) safe?

Tirzepatide was licensed for use as a weight loss medication in the UK as of November 2023.

Whilst generally considered safe, Tirzepatide is still a relatively new medication and users should always seek the advice and guidance of their health care specialist before use.

6. Side Effects

As with any medication, there are potential side effects that can occur.

Examples of the most common side effects are:

- Upset stomach
- loose stools (diarrhea)
- feelings of nausea

The common side effects experienced by slimQuick. users are generally mild, and subside within a few days.

Adverse effects, whilst extremely uncommon, can occur. If you experience severe symptoms, please consult your healthcare specialist. From our extensive testing of slimQuick. users have found that in comparison to other weight-loss products that are available, slimQuick presents mild side effects that are short-lived and easily manageable.

7. Who shouldn't use slimQuick./Contraindications

There are certain medications that can cause possible interactions with slimQuick. (Tirzepatide):

- Certain birth-control pills
- Certain diabetes medicines
- Warfarin
- Carbamazepine
- Digoxin
- Adderall

Those with a family history of Medullary Thyroid Cancer (MTC) or Multiple Endocrine Neoplasia Syndrome (MEN 2) should not use Tirzepatide as it may increase your risk of Thyroid Cancer.

Please always consult your healthcare specialist if you require medical information.

8. What is tripleCheck.?

New Aesthetic products are all protected by our unique 3-stage product authenticity system, that confirms validity of our products and makes counterfeiting copies practically impossible to produce.

1. There is a silver branded New Aesthetic hologram bearing the brand logo on the front of the box
2. The product labels are embedded with an anti-counterfeit branded micro-text.
3. There are tamper-proof security stickers sealing the product box shut at both ends.

We have gone to great lengths with our design and security team, to ensure that our products cannot be imitated or copied. This guarantees that our customers receive the level of unmatched quality that they expect from genuine New Aesthetic products.

9. How to store slimQuick.?

Once you remove your slimQuick. pen(s) from its packaging, it is recommended that you place it directly inside your **refrigerator**, and ensure that the temperature is set to between **2° and 8° Celsius**.

Keep your slimQuick. product(s) refrigerated at all times, other than when you remove them for use. Refrigeration preserves the quality of the Tirzepatide contained within your slimQuick. pen. If exposed to a heat source, the quality may be affected. If there isn't room for the slimQuick. box in your refrigerator, place pen(s) inside a sealed sandwich bag to ensure that they remain clean and dry.

DO NOT FREEZE your slimQuick. pen(s)

It is not necessary to refrigerate your needle caps and alcohol wipes.

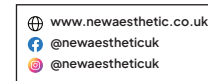
Keep out of reach of children.

Please dispose of needle caps responsibly

10. Further Questions/Information

Still unsure of anything? Need to verify a New Aesthetic product you have bought?

Interested in working with us as a reseller or affiliate? Please don't hesitate to reach out to us



📞 We also have live chat support via WhatsApp using this QR code



1. What is slimQuick.?
2. How does slimQuick. work?
3. How to dose slimQuick.?
4. What can you expect from slimQuick.?
5. Is slimQuick. (Tirzepatide) safe?
6. Side effects
7. Who shouldn't use slimQuick. / Contraindications.
8. What is tripleCheck.?
9. How to store slimQuick.
10. Further Questions/Resources

1. What is slimQuick.?

slimQuick. is a pen injection product containing a minimum of 15mg of lab-test certified Tirzepatide.

The Tirzepatide in slimQuick. is conveniently pre-mixed with bacteriostatic water, so that there is no need for any tricky calculations and so removes the risk of any mistakes being made.

slimQuick. enables you to simply twist the dial on the pen to select required dosage, so that no error can be made with dosage selection either.

2. How does slimQuick. work?

slimQuick. (Tirzepatide) works by mimicking the action of two hormones naturally produced within the small-intestine after eating, GIP and GLP-1.

This dual action effect sets slimQuick. apart from other weight-loss medications on the market, which only have a single method of action. slimQuick.:

- Slows down digestion, helping you feel fuller for longer.
- Sends signals to the area of the brain responsible for stimulating appetite, resulting in reduced appetite.
- Helps the pancreas to release insulin, which lowers blood sugar and helps regulate appetite and lower cravings for sugary food.

The hardest part of losing weight is sticking to a diet. Without dietary-compliance, no amount of exercise will help you to achieve weight loss.

slimQuick. enables you to stick to your diet plan, without the miserable feeling of being hungry all the time, and without you falling victim to those late-night cravings that can easily un-do your entire day's efforts!

3. How to dose slimQuick.?

It is recommended that all slimQuick. users begin their journey on what is considered medically as the **"introduction dose"** of **2.5mg** per week.

Users generally stay at this intro dose for **3-4 weeks**.

This intro dose serves to enable the user to get used to slimQuick. and assess tolerance.

Whilst most side effects are mild, (covered in section 8) and an adverse reaction is extremely uncommon, we still recommend you take the time to allow your body to get used to slimQuick. before proceeding to a higher dose.